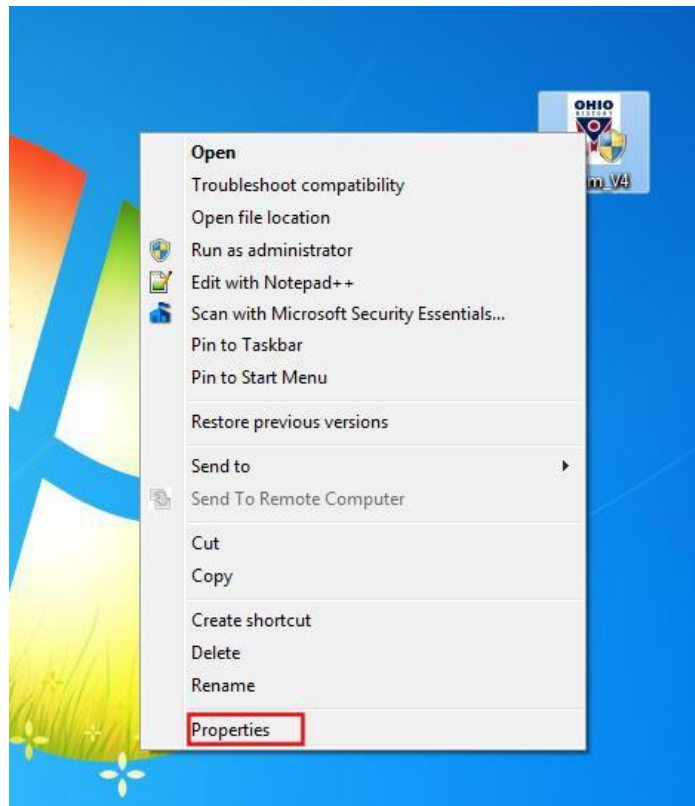


Setting IForm to run in compatibility mode on machines with Windows 7 Operating System- 10-28-2012

Users installing IForm on a machine running any version of Windows 7 must set the IForm application to run in XP compatibility mode.

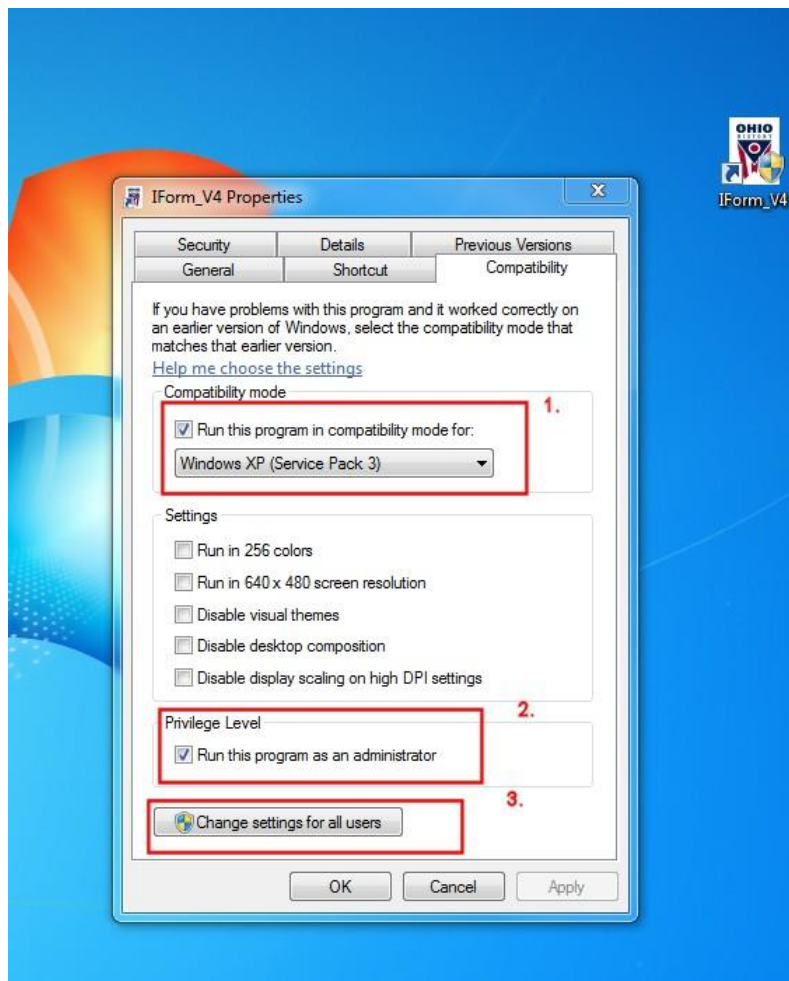
After the IForm application has been installed, right-click on the desktop shortcut to reveal a task menu. Select the **Properties** option.



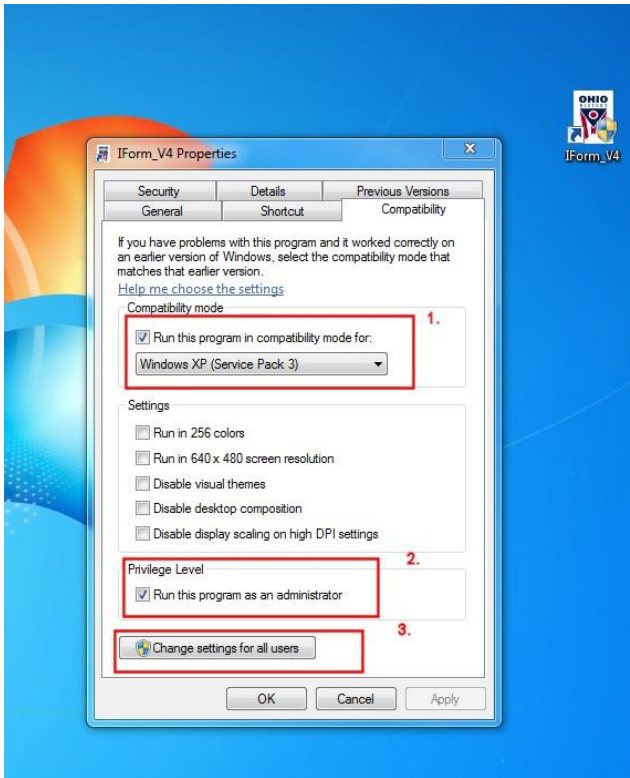
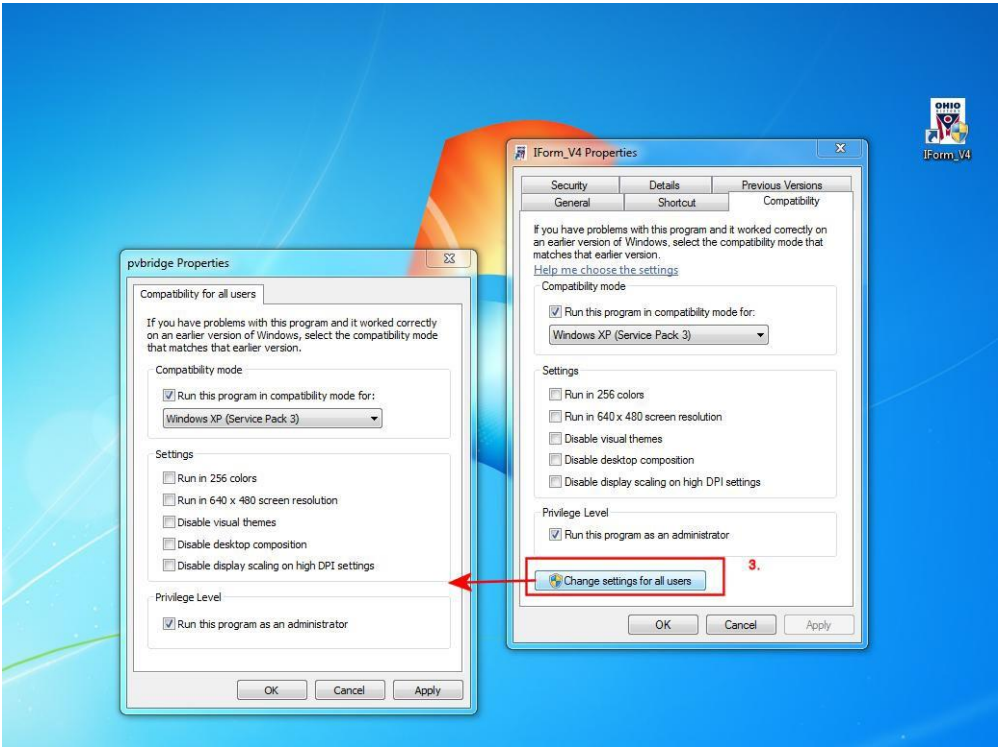
The IForm_V4 Properties window will appear

Click on the **Compatibility** tab and check the **Run this program in Compatibility mode** for:

1. Select **Windows XP (Service Pack 3)** from the drop-down list.
2. Under Privilege Level check the box next to **Run this program as an administrator**.
3. Click on the **Change setting for all users** button.



The **Compatibility for all users** tab of the pvbridge properties window will appear. Select the options on this window to match the same options as the previous window and click on the OK button



The IForm application is now set to run in the proper compatibility mode.